



Program Pre-Requisites Photo Guide

Updated August 13, 2025



California Energy-Smart Homes Incentive Program

PHOTO GUIDE FOR REQUIRED PRE-REQUISITES

- Each of items shown in this guide is a mandatory requirement for participation in the Energy-Smart Homes incentive program and **must be installed as specified. No exceptions.**
- **Omission or improper installation** of any of the required items will result in the project being disqualified from the Energy-Smart Homes incentive program.
- **Disqualified projects will forfeit all program incentives. No exceptions.**

Water Heating Requirements for Plumbing Installers

Heat Pump Water Heating

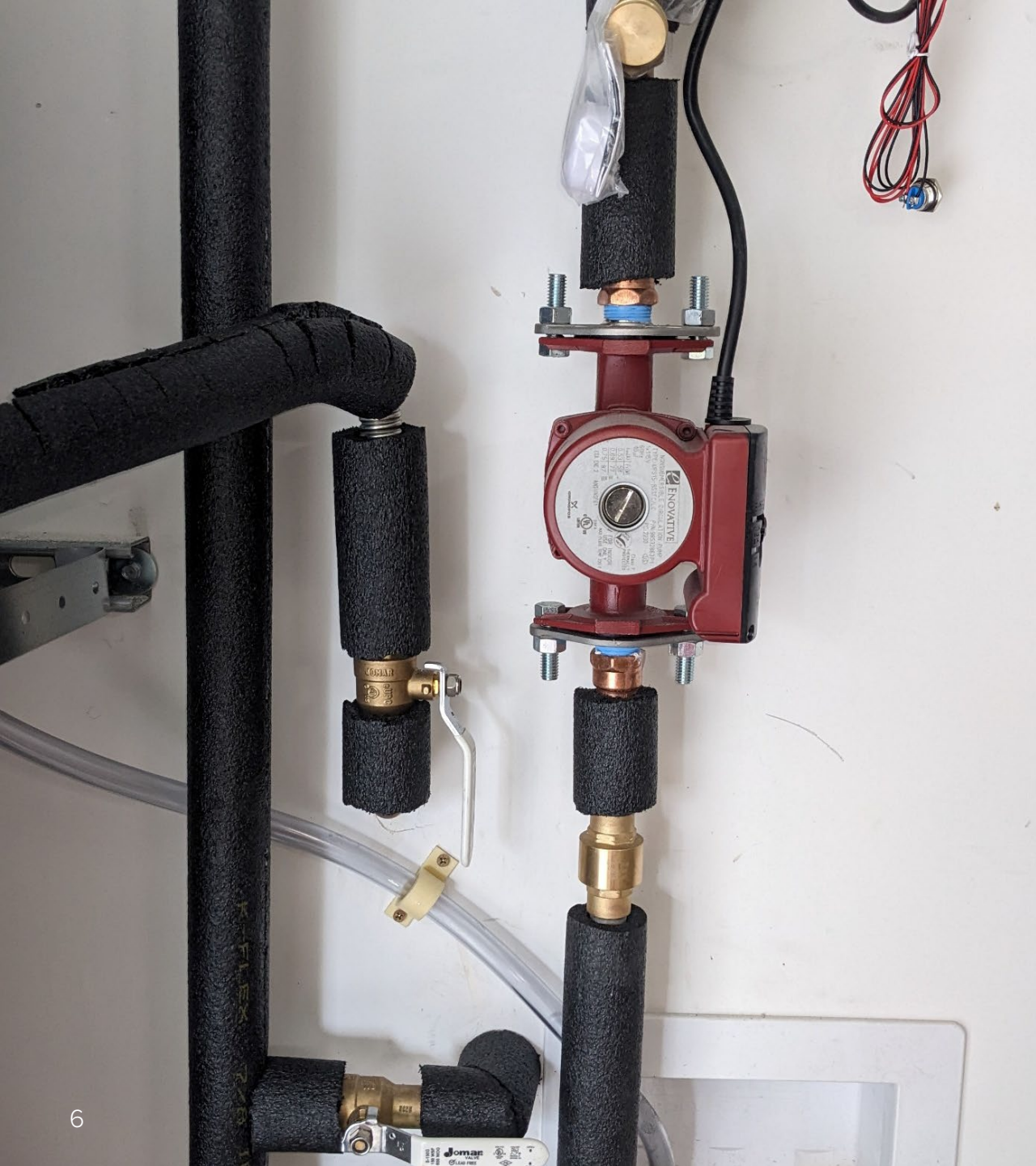
- **All water heating systems must utilize heat pump technology** as the primary method of heating water.
- **Electric resistance water heaters are not eligible** for program participation, regardless of size or configuration.
- **Projects that do not meet the heat pump water heating requirement will be removed from the program** and will forfeit all incentives. No exceptions.





Thermostatic Mixing Valves

- The **Thermostatic Mixing Valve (TMV)** is **required to mix hot and cold water** to deliver safe water temperatures and prevent scalding at point of use.
- **The TMV must be installed at each unitary water heater**, not at individual faucets or shower heads. Do not confuse TMVs with point-of-use tempering valves.
- **Installation must occur outside the water heater tank**, where the hot water outlet and cold-water inlet lines merge.
- **All TMVs must be ASSE 1017 certified.**



Thermostatic Mixing Valve Exceptions

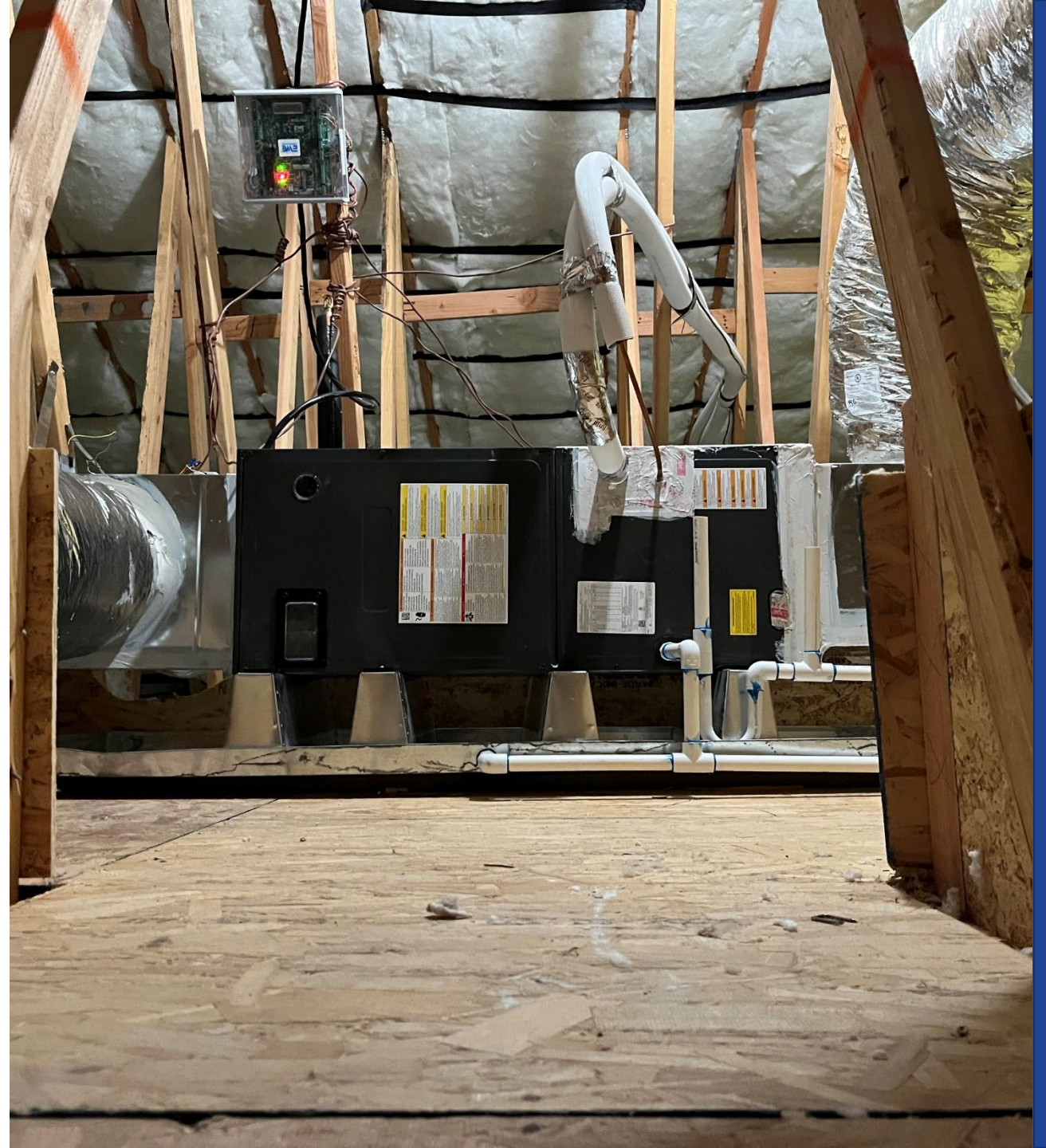
The program does not require a Thermostatic Mixing Valve (TMV) for the following project types:

- **Accessory Dwelling Units (ADUs)**
- **Projects that include a recirculation loop** as part of their water heating system design

Space Conditioning Requirements for HVAC Installers

Heat Pump HVAC

- **All installed HVAC systems must use heat pump technology** as the primary source for both heating and cooling.
- **Systems that rely on electric resistance heating as the primary method** (such as baseboard heaters or electric furnaces) are **not eligible** for the program.



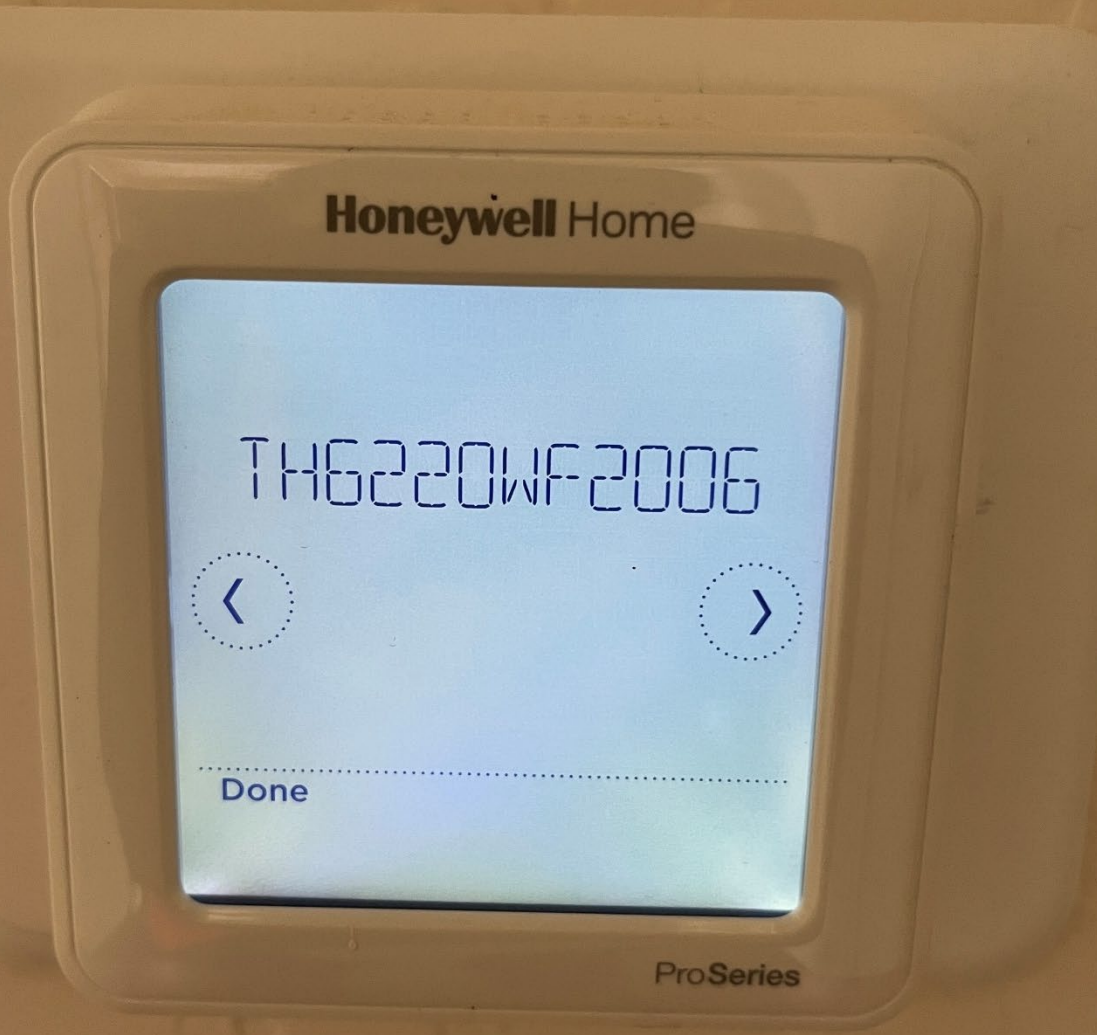
Heat Pump HVAC

- **All installed HVAC systems must use heat pump technology** as the primary source for both heating and cooling.
- **Systems that rely on electric resistance heating as the primary method** (such as baseboard heaters or electric furnaces) are **not eligible** for the program.



Communicating Thermostats

- **Thermostats must be programable and wi-fi enabled**, allowing remote temperature adjustment with a smartphone or other internet-connected device.
- **Thermostats must be Auto Demand Response (ADR) capable.**
- **Projects installing variable capacity heat pumps (VCHP) are exempt** from the communicating thermostat requirement.
- **Tenants are not required to enroll in an ADR program**, but the thermostat must be technically capable of ADR participation to qualify.



Induction Cooking Requirement

Induction Range

- **Induction cooking must be permanently installed** and serve as the only cooking technology for the unit.
- **Portable induction burners are not permitted** and do not satisfy program enrollment requirements.
- **Cooking appliances that rely on electric resistance heating** (e.g. coil or radiant cooktops) **are not eligible** for the program.





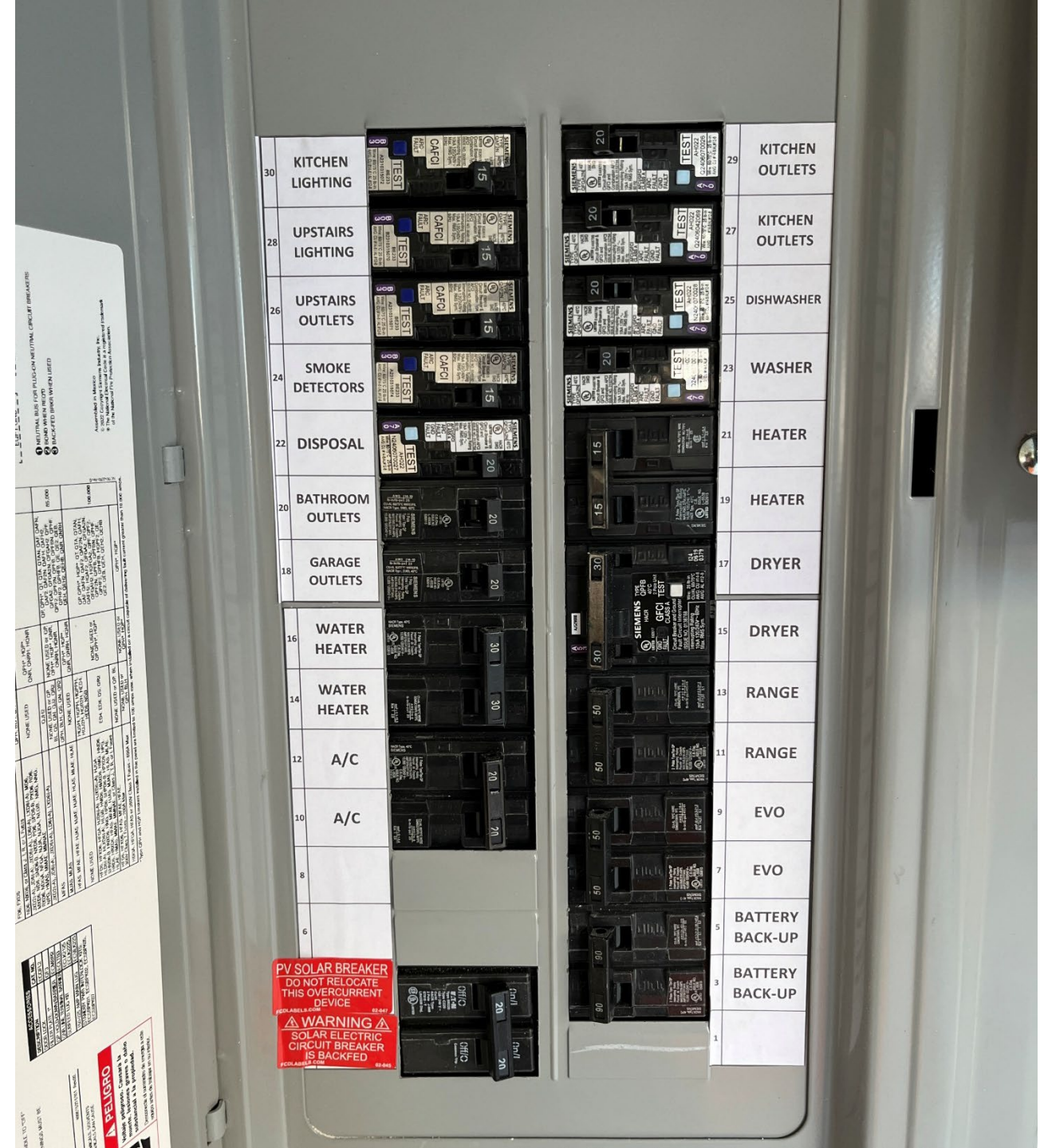
Induction Cooktop

- **Induction cooking must be permanently installed** and serve as the only cooking technology for the unit.
- **Portable induction burners are not permitted** and do not satisfy program enrollment requirements.
- **Cooking appliances that rely on electric resistance heating** (e.g. coil or radiant cooktops) **are not eligible** for the program.

Electrical Panel Requirements for Electricians

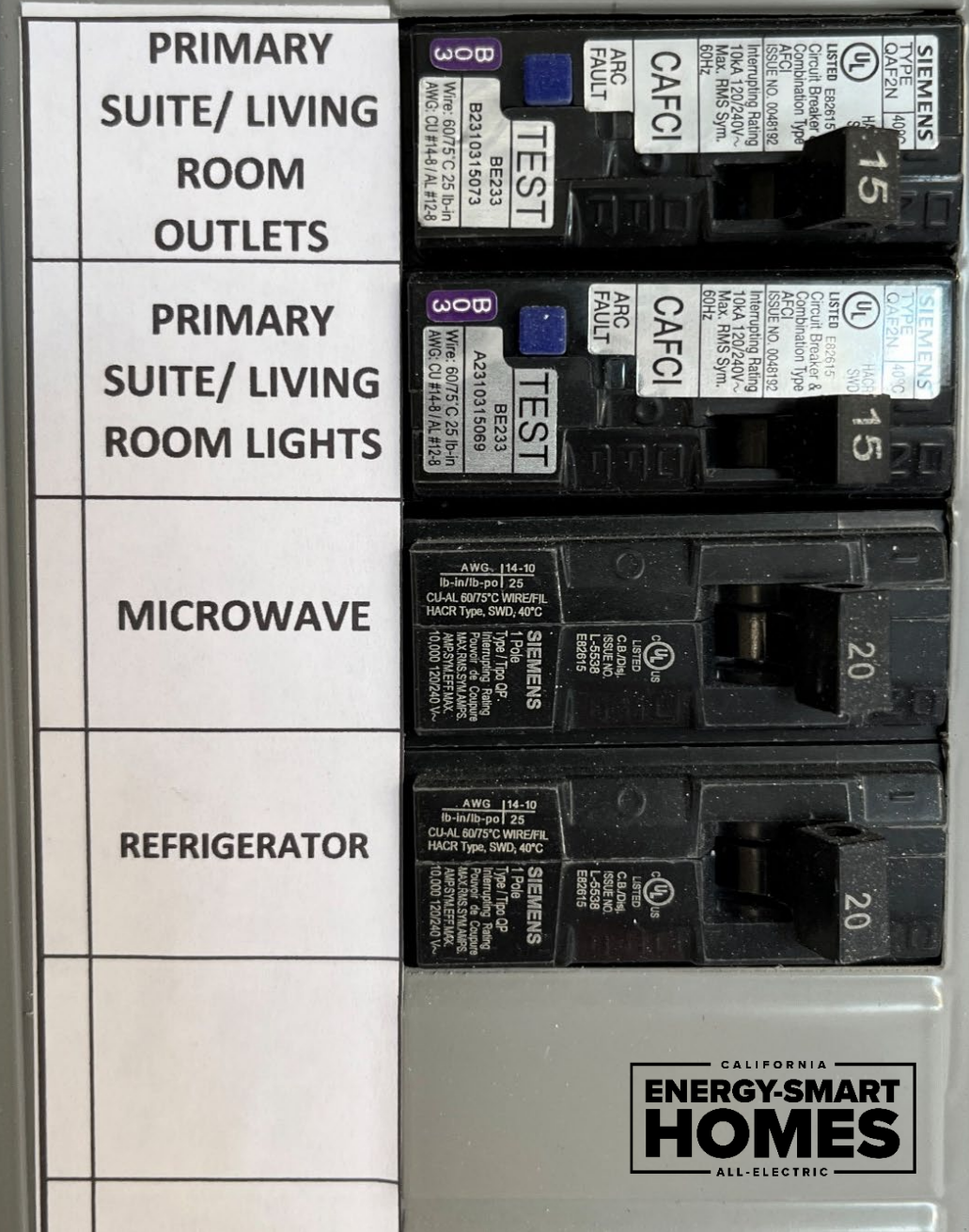
Segregated Circuits

- **Segregated circuits are required**, meaning interior lighting loads and plug loads must be placed on separate electrical circuits.
- **No single circuit can serve more than one load type**, each circuit must be dedicated solely to either lighting, plug loads, or a single major appliance.
- **Shared circuits across load types are not permitted** and will result in disqualification from the incentive program.



Battery Storage Readiness

- A minimum of four branch circuits must be designated and collocated at a subpanel intended for connection to an energy storage system (ESS).
- At least three of the designated circuits must include:
 - One circuit supplying the **refrigerator**
 - One **lighting circuit** located near the primary egress
 - One **receptacle outlet** serving a sleeping area
- The fourth circuit is **flexible** and may serve any load at the project team's discretion.



Electric Vehicle (EV) Plugs Requirement for the Electrician

Electric Vehicle (EV) Plug

- All lots/units must include a **dedicated 208/240-volt branch circuit** installed in the raceway.
- A **208/240-Volt EV plug** must be installed in the garage or carport of each home.
- The branch circuit, overcurrent protective device, and plug must be rated for a minimum of 40 amps.
- For multifamily projects permitted before **July 1, 2024**, the **10% of EV Capable Spaces** (per CALGreen code) must have 208/240-volt EV plugs.
- Projects permitted after **July 1, 2024**, must fully comply with **CALGreen code 4.106.4.2.2** for EV charging infrastructure.

